



DIAGNOSTIC MEDICAL SONOGRAPHY

PROGRAM



RHSchoolofHealthSciences.org



OUR MISSION

Reading Hospital

MISSION STATEMENT

The mission of Reading Hospital is to provide compassionate, accessible, high-quality, cost-effective healthcare to the community; to promote health; to educate healthcare professionals; and to participate in appropriate clinical research.

Reading Hospital School of Health Sciences

MISSION STATEMENT

The mission of Reading Hospital School of Health Sciences is to provide educational programs that develop competent and compassionate professionals capable of providing high-quality healthcare services to individuals, families, and communities.

Diagnostic Medical Sonography Program

MISSION STATEMENT

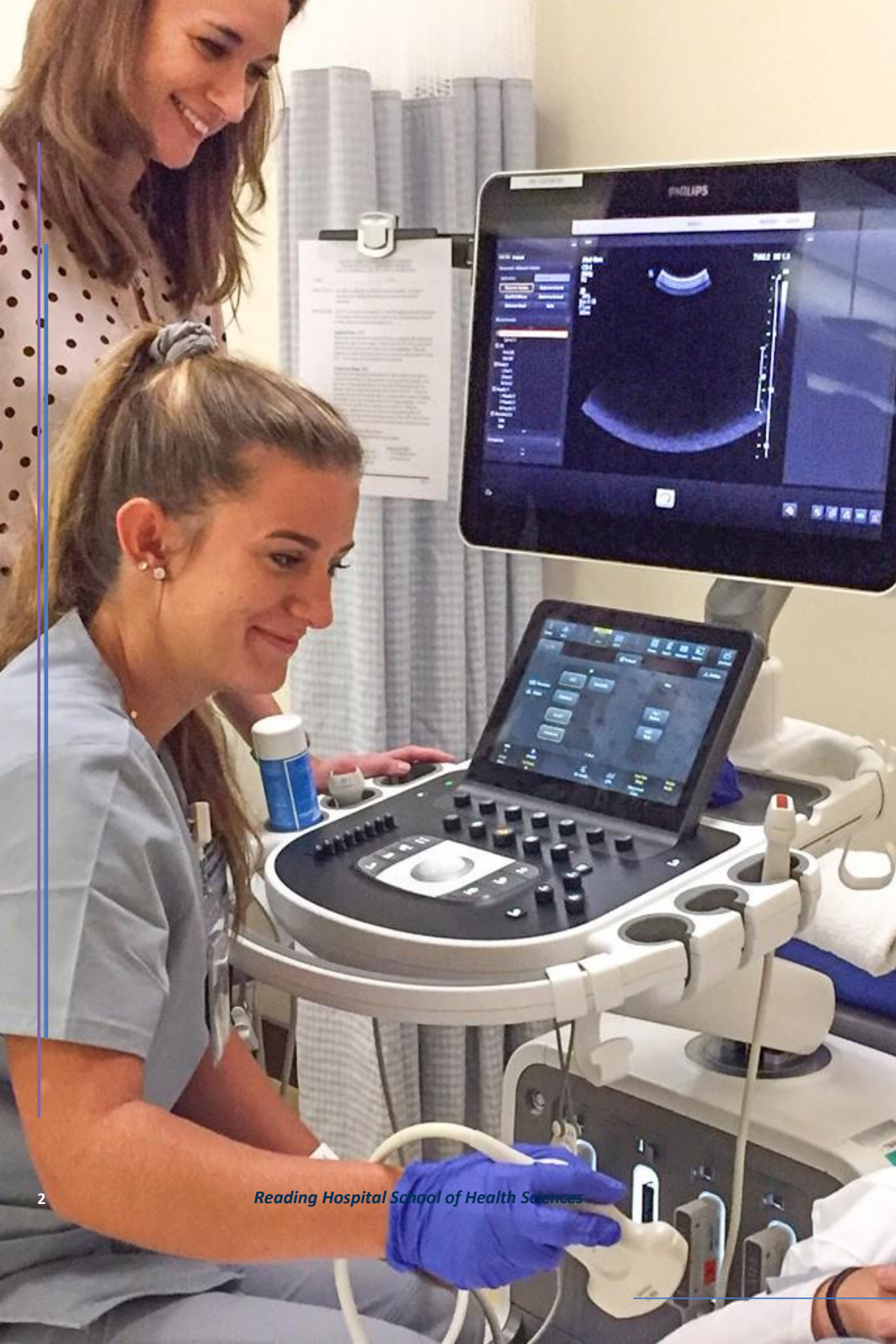
The mission of the Diagnostic Medical Sonography program is to develop competent, entry-level sonographers who promote excellence and integrity in patient care by demonstrating professional proficiency and currency in skills through a commitment of lifelong learning.



Thank you for inquiring about the Diagnostic Medical Sonography Program offered by Reading Hospital School of Health Sciences. This booklet is designed to provide information about this educational opportunity.

TABLE OF CONTENTS

- Greetings from the School Director 3
- Welcome 4
- Program Learning Goals 4
- Essential Functions..... 6
- Our Philosophy 8
- Accreditation 9
- Diagnostic Medical Sonography Program Overview..... 10
- Transfer Credits Policy 11
- Admission Information 12
- Curriculum 19
- Course Descriptions..... 21
- Cost and Expenses..... 26
- The Academic Environment 27
- Consumer Information Disclosure..... 30
- Program Outcomes 31
- Campus Map..... 32



GREETINGS FROM THE SCHOOL DIRECTOR



Welcome to Reading Hospital School of Health Sciences, home to excellent educational programs designed to develop competent and compassionate healthcare professionals. On behalf of the faculty, staff, and students in the school, I would like to thank you for your interest in our educational programs.

As hospital-based programs, we are committed to preparing individuals like you to become skilled professionals in a career such as Diagnostic Medical Sonography, Emergency Medical Services (EMT through Paramedic), Medical Laboratory Science, Medical Imaging, Nursing, Phlebotomy, or Surgical Technology. Our experienced classroom and clinical faculty is known for their dedication to helping individuals achieve success, and are committed to providing classroom, laboratory, simulation, and clinical experiences that support excellence in teaching and learning.

RHSHS provides:

High quality, affordable education...

A starting path to a bachelor's degree...

Your pathway to an exciting career in healthcare.

This is your chance to make a difference and become a respected member of a healthcare profession. Our faculty, staff, and administrators are happy to meet students, families, alumni, or other visitors, and I hope to see you on campus soon.

Sincerely,

Dr. Debbie J. Rahn

WELCOME

Welcome! The Diagnostic Medical Sonography program at Reading Hospital School of Health Sciences offers students exceptional classroom and clinical experiences in preparation to provide compassionate, ethical, and evidence-based patient care when delivering Diagnostic Medical Sonography imaging services and student learning outcomes.

The 27-month Diagnostic Medical Sonography program, leading to an Associate in Science degree, is a cooperative degree program between Reading Hospital School of Health Sciences (RHSHS) and Alvernia University. In addition to the Associate in Science degree, graduates will receive a Certificate in Diagnostic Medical Sonography from RHSHS.

A Rewarding Career

As a graduate, you will be able to seek entry-level employment at many hospitals, outpatient imaging facilities, clinics, and doctors' offices. Sonographers perform their duties in diagnostic labs, trauma centers, emergency rooms, operating rooms, interventional suites, labor and delivery facilities, and at the bedside.

Graduates looking to advance their professional skills can pursue Alvernia University's Bachelor of Science in Healthcare Science Program. Courses are offered in blended and online formats to allow our graduates to maintain work hours while earning their advanced degree.

Reading Hospital School of Health Sciences complies with applicable Federal civil rights laws and does not discriminate on the basis of race, color, national origin, age, disability, or sex. Reading Hospital School of Health Sciences does not exclude people or treat them differently because of race, color, national origin, age, or disability, or sex.

DIAGNOSTIC MEDICAL SONOGRAPHY PROGRAM LEARNING GOALS

The Diagnostic Medical Sonography program is committed to preparing competent entry-level general sonographers in the cognitive (knowledge), psychomotor (skills), and affective (behavior) learning domains. Through active participation in all scheduled classes and clinical assignments, the student will learn the skills necessary to provide healthcare to their community in a professional, compassionate, and responsible manner.

This program is designed to prepare students to:

- Provide sonographic imaging services with a health care setting for a diverse patient population with an awareness of cultural diversity within the community.
- Operate sonographic imaging equipment safely, effectively, and efficiently.
- Create and evaluate sonographic images.
- Apply computation skills to provide safe exposure to patients.
- Develop competency in assessing patients and devising ways to image compromised patients.
- Provide imaging procedure patient education.
- Respect patient confidentiality and follow HIPAA guidelines.
- Practice sonography in a manner consistent with ARDMS and SDMS ethical guidelines.
- Use effective communication skills when collaborating with multidisciplinary health team members.
- Develop interpersonal and communication skills to effectively interact with diverse population groups.
- Provide appropriate life-support measures for medical emergencies that may be encountered in a sonographic imaging setting.
- Use resources to enhance self-development and professional growth.
- Apply effective oral, visual, and written communication skills.
- Demonstrate knowledge and understanding of human sectional anatomy relative to normal and abnormal sonographic imaging.
- Apply ultrasound principles and instrumentation relative to imaging and image quality.
- Demonstrate appropriate ergonomic scanning applications.
- Demonstrate the ability to provide patient care while following ethical standards, HIPAA guidelines, and maintaining professionalism.
- Recognize and use resources to enhance self-development and professional growth.

ESSENTIAL FUNCTIONS FOR DIAGNOSTIC MEDICAL SONOGRAPHY STUDENTS

The Essential Functions have been established as a tool for realistically informing students of the minimum requirements needed, with or without reasonable accommodation to successfully participate in the Program. Applicants should carefully review the Essential Functions and ask questions if not familiar with the activities or functions listed.

In order to be admitted into the program, the DMS applicant must affirm in writing their ability to comply with the following:

I. Communications Skills

- Ability to articulate clear verbal commands to the patient while the patient is being positioned for a procedure from a distance of a few feet.
- Present cases to educators or physicians through concise verbal or written communication.
- Act upon verbal and/or written directions quickly and under pressure.
- Communicate and interact effectively with all parties in a healthcare settings (patient, families, co-workers, attending/referring physicians).

II. Cognitive Ability

- Must have the ability to comprehend written and verbal instructions correctly in academic and clinical healthcare settings.
- Must be able to complete assigned tasks in a reasonable and acceptable time frame.
- Have the ability to read and comprehend written classroom material, documents and settings on the computer screens, medical documents, and institutional policies and procedures.
- Must be able to evaluate proper patient positioning and other essential factors for the purpose of quality control.

III. Mobility

- Must be able to move freely with full manual dexterity of both upper and lower extremities, have unrestricted movement of hands, neck, shoulder, back, and hips in order to assess, observe and perform emergency patient care, assist with all aspects of patient care, and be able to touch the floor for the removal of environmental hazards.
- Hand-eye coordination.
- Have good right and left wrist and hand grip, and maintain prolonged arm positions for scanning.
- Have the ability to appropriately position patients for procedures and safely transfer patients who may weigh in excess of 300 pounds (in wheelchairs and/or litters).
- Ability to keep arm and hand steady while manipulating transducer.

IV. Physical Ability

- Must have the physical ability to move sonography equipment and manipulate the handheld transducer.
- Stand and walk for extended periods of time (several hours).
- Lift and/or support at a minimum 75 pounds in order to lift and carry accessories.
- Push heavy equipment up to 200 pounds.

V. Hearing Acuity

- Discriminate subtle sounds and audible Doppler signals.
- Obtain patient history and pertinent information while patient is turned away from you or speaking from a distance.

VI. Visual Acuity

- Able to visually adapt to varying levels of light.
- Acute enough to distinguish parenchymal texture changes and shading differences.
- Distinguish colors and interpret color flow signals.

VII. Tactile Ability

- Feel anatomical landmarks.
- Have sufficient tactile ability in order to assess a patient's pulses and changes in physiologic status (i.e. changes in edema, skin temperature, palpation of masses/lesions, etc.).
- Ability to manipulate small knobs and equipment settings.

VII. Olfactory Ability

- Have the ability to smell odors that may signify a change in the physiologic status of a patient or an unsafe environmental condition.

IX. Professionalism

- Must be poised, well-groomed and neat in appearance, discreet, tactful, diplomatic, professional, versatile, ethical, and dependable in various situations.
- Must exhibit the capacity for reasoned judgment and calmness in a healthcare environment.
- Must show honesty and integrity in all matters with peers, faculty, staff, and patients.
- Must display compassion, empathy, and concern for others condition.
- Must demonstrate accountability, problem solving, and listening skills at all times.

OUR PHILOSOPHY

Reading Hospital School of Health Sciences

PHILOSOPHY

The Reading Hospital School of Health Sciences aims to challenge students with educational experiences that enhance understanding of their discipline, reinforces the critical nature of interdisciplinary practice in healthcare, and inculcates the value of lifelong learning. We seek to build a collegial alliance of faculty, students, staff, and administration committed to providing course work, resources, activities, and instructional facilities that support excellence in teaching and learning.

We believe that a strong educational foundation helps students to integrate learning and community interests and prepares them for success in their major fields of study and professional life. All programs of study at the school encourage the examination of fundamental questions of human experiences and respectful dialogue in the context of diverse points of view.

The faculty is also responsible for developing academic policies and the design and content of the program curriculum. The faculty, through its teaching, scholarship, and service, is the most visible example of the intellectual life of the school.

We seek students of diverse cultures, talents, experience, and interests who seek to excel both as persons and in the study of a healthcare related profession.

We seek students who are able to assume responsibility for their academic success, a quality that anticipates the accountability and ethical demands of professional practice.

The members of our administrative leadership and academic support services are dedicated to the success of our teaching and learning endeavor. They are charged with fostering strategic planning, institutional assessment, and effective stewardship of School resources. They support the development of organized school activities that provide opportunities for community engagement and foster development of leadership skills.

Diagnostic Medical Sonography Program

PHILOSOPHY

The Diagnostic Medical Sonography program is committed to helping students view themselves as integral members of a healthcare team whose function is to collectively provide the highest quality patient care achievable. The academic and clinical curricula of the Diagnostic Medical Sonography program are purposefully designed to educate entry-level practitioners who are well prepared to provide compassionate, ethical, and evidence-based patient care when delivering diagnostic medical sonography services. Students learn to meet the total needs of the patient, with emphasis placed upon the core values of the Diagnostic Medical Sonography program (compassion, integrity, precision, accountability, and respect) as well as the Franciscan tradition at Alvernia University (service, humility, peacemaking, contemplation, and collegiality).

Accreditation

The Reading Hospital School of Health Sciences Diagnostic Medical Sonography Program is accredited by the Commission on Accreditation of Allied Health Education Programs (www.caahep.org) upon the recommendation of the Joint Review Committee on Education in Diagnostic Medical Sonography (www.jrcdms.org) for Abdominal Sonography - Extended and Obstetrics and Gynecology Sonography. CAAHEP is located at 9355 - 113Th St. N, #7709, Seminole, FL 33775. Phone: 727-210-2350, Fax: 727-210-2354.

American Registry for Diagnostic Medical Sonography (ARDMS)

Students are eligible to take the Sonographic Principles and Instrumentation (SPI) and specialty credentialing exam through the American Registry for Diagnostic Medical Sonography (ARDMS) prior to graduation.

DIAGNOSTIC MEDICAL SONOGRAPHY PROGRAM OVERVIEW

The 27-month Diagnostic Medical Sonography program leading to an Associate in Science degree is a cooperative degree program between Reading Hospital School of Health Sciences (RHSHS) and Alvernia University. In addition to the Associate in Science degree, graduates will receive a Certificate in Diagnostic Medical Sonography from RHSHS. Graduates of the Diagnostic Medical Sonography program are eligible to take the national credentialing exams through the American Registry for Diagnostic Medical Sonography (ARDMS) upon meeting specific requirements.

Reading Hospital School of Health Sciences Diagnostic Medical Sonography program is committed to prepare competent entry-level general sonographers in the cognitive (knowledge), psychomotor (skills), and affective (behavior) learning domains.

Dual Enrollment Affiliation with Alvernia University

Dual Enrollment is structured to provide a seamless career mobility pathway while providing our graduates with the knowledge, skills, and credentials to sit for national certification examination. Qualified graduates will be eligible to receive the following credentials:

- Certificate in Diagnostic Medical Sonography
- Associate of Science Degree from Alvernia University

The 27-month Dual Enrollment Program is designed to provide theoretical knowledge and hands-on application through rigorous clinical experiences. Classes and clinical experiences are held Monday through Friday between 7 a.m. and 5 p.m. The liberal arts courses are taught by Alvernia University faculty. These courses provide students with a well-rounded background, as well as meet the requirements for the Associate of Science degree from Alvernia University.

Credit Breakdown

47 Total Diagnostic Medical Sonography credits

33 General Education and Related Requirements credits

Total: 80 credits

Credit Hours

Credit assigned to sonography courses does not constitute “college credit” and does not imply sonography courses earn the equivalent of college credit. The term “credit” assigned to sonography courses is for grading purposes only. Only an authorized degree-granting institution in which a student enrolls may determine whether the completed sonography course may be accepted for “college credit.” It does not refer to academic credits or to the awarding of college credit and degrees.

The Diagnostic Medical Sonography program defines a credit hour as: a unit of measure that places a value to the level of instruction and time requirements for a sonography or general education course. The Diagnostic Medical Sonography program is responsible for determining the credit hours awarded for all courses offered in the Diagnostic Medical Sonography program of study.

- **Sonography Courses:** The credit to contact hour of 1:1 in classroom instruction (lecture) and 1:5 in clinical experience/laboratory (clinical) is utilized to determine credit hours for sonography courses. A ratio of 1:15 for classroom theory hours (15 hours of lecture = 1 credit hour) and 1:75 for skills/clinical laboratory experience (75 hours of clinical = 1 credit hour).
- **General Education Courses:** The credit to contact hour of 1:1 in classroom instruction (lecture) and 1:2 in laboratory is utilized to determine credit hours for general education courses delivered by Alvernia University. A ratio of 1:15 for classroom instruction (15 hours of classroom instruction = 1 credit hour) and 1:30 for laboratory experience (30 hours of laboratory experience = 1 credit hour).

All applications for admission into the Diagnostic Medical Sonography Dual Enrollment Program should be submitted to Reading Hospital School of Health Sciences.

Transfer Credits Policy

It is the policy of RHSHS to evaluate and award credit for college level courses completed through a regionally accredited institution of higher education and other accredited schools or programs as recognized by the Council for Higher Education Accreditation, College Board Advanced Placement (AP), and College Level Examination Program, for transfer credit purposes. To review the transfer credits policy and procedure for awarding credit, please go to <https://reading.towerhealth.org/app/files/public/3906/304-Transfer-Dual-Enrollment-Programs.pdf>.

ADMISSION INFORMATION

The Office of Admissions is committed to addressing future students' needs, whether the applicant is a first-time student or a working adult seeking a new career. Staff members are eager to assist future students throughout the admissions process—from the first inquiry to preparation to attend orientation prior to the start of the admission class.

We offer the following admission activities on campus:

- Program Discovery Events
- Admission Visits and Tours
- Shadow Program

Please note: It is strongly recommended that applicants shadow a professional in the field of diagnostic medical sonography in preparation for admission and success in the program.

Procedure

The Diagnostic Medical Sonography (DMS) program student admission is the responsibility and at the discretion of the Reading Hospital School of Health Sciences. Admission standards meet and/or exceed Alvernia University's admission standards. Admission to the Diagnostic Medical Sonography program is competitive and the selection of students will be based on personal composition, academic ability, references, interview performance, aptitude tests, writing samples, and previous healthcare experience.

The Diagnostic Medical Sonography program admits classes every January. The application deadline for January enrollment is June 1 or when qualified student capacity has been reached.

Admission into the program is highly competitive. For this reason, the program director operates in accordance with a selective admission process, which means the best-qualified applicants each year receive consideration for admission.

Reading Hospital School of Health Sciences complies with applicable Federal civil rights laws and does not discriminate on the basis of race, color, national origin, age, disability, or sex. Reading Hospital School of Health Sciences does not exclude people or treat them differently because of race, color, national origin, age, disability, or sex.

General Admissions Requirements

- Applicants must be citizens of the United States or provide documentation of permanent residency or working status.
- All applicants must have a high school diploma or state-authorized examination (e.g., General Educational Development Certificate (GED)), High School Equivalency Test (HiSET), and the Test Assessing Secondary Completion (TASC). Home-schooled students must have a diploma from an accredited home school association, or have met requirements for the GED or other state authorized examination. The School does not admit applicants based upon the ability-to-benefit testing process.
- Applicants may be required to take post-secondary coursework to meet the academic requirements of the individual programs. Cumulative grade point average (GPA) of 2.5 or greater in high school or post-secondary coursework may be required for all applicants and candidates for admission consideration. The most recent post-secondary GPA will be used in the admission decision.
- At the discretion of the individual Program, applicants may be required to submit scores from the Scholastic Aptitude Test (SAT) administered by the College Entrance Examination Board or the American College Testing Assessment Program (ACT) administered by the American College Testing Program. This requirement may be waived for applicants with earned college degrees.
- Potential students must submit two reference forms from teachers, guidance counselors, employers, supervisors, or others. Healthcare professionals must submit one reference from the current or most recent healthcare employer.

Technical Standards for All Applicants

Successful completion of a School of Health Sciences program necessitates mental and physical health essential to meet the objectives of the curriculum, as well as other skills necessary for success in the classroom and clinical components of the program. Based on these criteria, applicants must:

- Be able to read, write, and speak the English language, and communicate in an understandable manner.
- Possess the emotional health necessary to fulfill the educational requirements of the Program.
- Demonstrate a history of personal integrity, compassion, motivation, and the ability to function in stressful situations.
- Be able to walk, stand, move, and sit for long periods of time.
- Possess auditory, visual, and tactile abilities sufficient to assess and monitor health needs and provide safe care.
- Possess interpersonal abilities sufficient to interact with individuals with various backgrounds.

In programs requiring physical skill and dexterity:

- Be able to lift and move patients and equipment.
- Have fine motor movement to complete tasks in a safe and effective manner.

The school makes every effort to accommodate students and applicants with disabilities. Any applicant with a documented disability can request special accommodations by notifying the Admissions Office in writing at the time of application.

Preadmission Information

All materials that are submitted to the Admissions Office become the property of the School of Health Sciences and cannot be returned or forwarded unless the applicant makes a formal request in writing to the School.

Any misrepresentation or omission of facts or essential documents during the application process and/or after acceptance into the Program will result in a delay, denial, or revocation of admission.

As deemed appropriate, the Admissions Committee reserves the right to waive admission requirements after reviewing an applicant's completed record. When applying to a program that requires preadmission testing or interviews, it is strongly recommended that applicants complete their admission file well in advance of the stated deadlines.

All applications must be completed by the deadline described under the Program-specific requirements. A completed application file must contain:

- A completed application and an application fee.
- Proof of permanent residency or working status, if applicable.
- An official high school transcript or GED.
- All official post-secondary transcripts, if applicable.
- A copy of Practical Nursing license, if applicable.
- A copy of American Heart Association BLS for Healthcare CPR certification, if applicable.
- Essay, if applicable.
- Aptitude test scores, as required.
- Two references, as required. The official school reference forms are located in the application booklet and on our website titled Catalogs, Forms & Brochures.
- Other program-specific information as requested.

Additional Requirements for Foreign-Educated Students

The school is not approved to issue or accept student visas. Applicants must show proof of permanent residency or working status. Test of English as a Foreign Language (TOEFL), administered by the Educational Testing Service (ETS), Princeton, New Jersey, may be required for applicants educated outside the United States or whose preferred language is not English, including those transferring from English-speaking colleges and universities. The School may require the following documentation to determine eligibility for admission.

- Satisfactory score on TOEFL. Testing must have occurred within two years of the application submission.
- An evaluation of foreign transcripts by the World Education Service (WES) or another approved agency is required.
- Certificate of Preliminary Education (CPE) from the Department of Education.
- General Education Development (GED).
- General Report from the Commission on Graduate Foreign Nursing Schools (CGFNS).
- Evidence of completion of required high school or post-secondary coursework.
- TOEFL Essential scores will be considered on an individual basis. Paper-based score of 560 or internet-based score of 83.

Minimum Admission Requirements

A cumulative grade point average (GPA) of 2.5 or greater in high school or post-secondary coursework is required for all applicants. The most recent post-secondary GPA will be used in the admission decision.

Current high school student applicants must submit a final official transcript reflecting the required cumulative GPA of 2.5 after graduation. A decline in current cumulative minimum required high school GPA, will result in cancellation of your enrollment in the program.

To be considered for admission, all applicants must show proof of the following:

- A high school diploma or a state-authorized examination.
- A high school transcript to include a minimum of 16 units and an earned grade of "C" or better in the following subjects and units:
 - English: 4 units
 - Social Studies: 3 units
 - Mathematics: 3 units, including Algebra I
 - Science: 3 units, including Physics or Chemistry/Lab (Physics is preferred).
- Applicants may be required to validate minimum admission requirements through college-level coursework.
- Successful completion of an interview, which is granted by the Program Director to the best qualified candidates.

- **SAT: 500** in each section; ACT composite of 19, Essay score of 7 or higher. Exceptions to the SAT/ACT requirement will be at the discretion of the Program Director.
- **TOEFL*** paper-based score of 560 or internet-based score of 83 (*if applicable).
- **Two official School of Health Sciences reference forms.**

Please note: Applicants will need to use the official School of Health Sciences reference forms when applying for admission. The reference forms for the DMS Program should be completed by a current or past employer, a supervisor, a teacher/instructor, a counselor, and/or clergy.

In addition to the minimum requirements, candidates who demonstrate “above average” educational potential will be considered for preferred admission based on the following criteria:

- **Documentation of a high school or collegiate cumulative GPA of 3.0 or higher.** The most recent GPA will be used in the admission decision.
- **An earned “B” or better in college level coursework in Mathematics, Biology, English, or Communications.**
- **Recommendations: “recommend with confidence” rating.**
- **Exemplary demonstration of communication and interpersonal skills during the formal admission interview.** The program offers formal interviews to the strongest candidates in the active applicant pool.

A numerical evaluation system is used during the admissions process to objectively determine the suitability of each candidate. Final selection is the responsibility of the program director.

Acceptance is contingent upon submitting post-acceptance documents, approved background checks, health information, and fees in accordance with established deadlines.

Decision Letters

Decisions regarding admission will be communicated in writing to applicants by the Admissions Office. If accepted, an applicant will receive an accepted student packet that will include specific details regarding post-acceptance requirements, deadlines, and forms.



Post-Acceptance Requirements

Acceptance is contingent upon submitting these post-acceptance documents and fees in accordance with established deadlines.

- **A non-refundable confirmation of enrollment fee of \$300 is due two weeks from the date of acceptance letter.**
- **Receipt of all official transcripts reflecting required GPA for program admission.**
Please note: Current high school student applicants must submit a final official transcript reflecting the required cumulative GPA of 2.5 after graduation. A decline in current cumulative minimum required high school GPA, will result in cancellation of your enrollment in the program. Refer to the minimum admission requirements on page 15.
- **Completed and approved Criminal Record Check and FBI Fingerprint.**
- **Completed and approved Pennsylvania Child Abuse History Clearance.**
- **Completed and approved National Healthcare Fraud and Abuse Check prior to admission and monthly during enrollment.**
- **Valid two-year BLS for Healthcare Provider CPR certification.**
- **Documentation of health insurance, including hospitalization benefits.**
- **Healthcare provider confirmation of required health screenings, tests, and immunizations.**
- **Copy of photo identification, as requested (i.e., valid driver’s license, school or employer identification, permanent residency card).**
- **Necessary paperwork used to verify official name or name changes.**
- **Other program-specific information as requested by admissions.**

Admitted students who fail to meet all these requirements by specified deadlines may have their admission offer revoked.

Deferment

The Diagnostic Medical Sonography program does not offer deferment of admission. Applicants who experience a change in personal circumstances which warrants a delay in admission date are encouraged to reapply.

Wait List

Qualified applicants may be wait-listed when the program's clinical and facility capacities have reached maximum levels. Wait-listed applicants will be notified if space becomes available. When admitted, applicants must meet the post- acceptance requirements outlined above.

Cancellation

Applicants whose files are cancelled by either their own efforts or the efforts of the Admissions Committee can reapply to a program at a later date.

Contact Information

Please send all materials to:
Reading Hospital School of Health Sciences
Attn: Office of Admissions
PO Box 16052
Reading, PA 19612-6052

For more information, please visit our website at RHSchoolofHealthSciences.org. or contact Admissions at:
Phone: 484-628-0100

Email: RHSHS@towerhealth.org

For more information on policies and procedures please log onto:
<https://reading.towerhealth.org/health-sciences/school-policies/>

CURRICULUM

In order to maintain enrollment in the program, students must pass each course with a 75 percent or higher and maintain an overall Diagnostic Medical Sonography Course average of 75 percent or higher.

SEMESTER ONE: SPRING

16 weeks

COURSE NUMBER	CREDITS	THEORY HOURS	LAB HOURS	CLINICAL EXPERIENCE HOURS
BIO 107/117	4	45	30	
MAT 102	3	45		
COM 101	3	45		
LAE 2 Creative Expressions Elective	3	45		
TOTAL	13	180	30	

SEMESTER TWO: SUMMER

12 weeks

COURSE NUMBER	CREDITS	THEORY HOURS	LAB HOURS	CLINICAL EXPERIENCE HOURS
BIO 108/118	4	45	30	
LAE 1 Communication Elective	3	45		
PHY 110	4	45	30	
TOTAL	11	135	60	

SEMESTER THREE: FALL

16 weeks

COURSE NUMBER	CREDITS	THEORY HOURS	LAB HOURS	CLINICAL EXPERIENCE HOURS
DMS 101	2	30		
DMS 105	3	45		
DMS 110	4	45	30	
THE 210	3	45		
TOTAL	12	165	30	

SEMESTER FOUR: SPRING

16 weeks

COURSE NUMBER	CREDITS	THEORY HOURS	LAB HOURS	CLINICAL EXPERIENCE HOURS
DMS 115	3	45		
DMS 120	2	30		
DMS 210	4	45	30	
PHI 105	3	45		
TOTAL	12	165	30	

SEMESTER FIVE: SUMMER

12 weeks

COURSE NUMBER	CREDITS	THEORY HOURS	LAB HOURS	CLINICAL EXPERIENCE HOURS
DMS 203	4	45	30	
DMS 227	2	30		
DMS 245	4			288
TOTAL	10	75	30	288

SEMESTER SIX: FALL

16 weeks

COURSE NUMBER	CREDITS	THEORY HOURS	LAB HOURS	CLINICAL EXPERIENCE HOURS
DMS 215	3	45		
DMS 228	3	30	15	
DMS 250	6			464
TOTAL	12	75	15	464

SEMESTER SEVEN: SPRING

16 weeks

COURSE NUMBER	CREDITS	THEORY HOURS	LAB HOURS	CLINICAL EXPERIENCE HOURS
DMS 255	6			472
DMS 260	1	15	15	
SOC 209	3	45		
TOTAL	10	60	15	472

DIAGNOSTIC MEDICAL SONOGRAPHY PROGRAM

COURSE DESCRIPTIONS

BIO 107 Human Anatomy and Physiology (3.0 credits)

Homeostatic mechanisms of the human body with emphasis on structure and function are studied. Gross and microscopic structures are correlated with function of cells, tissues, organs, and systems of the body. Major topics include: skeletal, muscular, and nervous systems. Three hours of lecture per week.

Co-requisite: BIO 117

BIO 108 Human Anatomy and Physiology II (3.0 credits)

Emphasis is on structure and function of endocrine, cardiovascular, respiratory, lymphatic, digestive, urinary, and reproductive systems. Gross and microscopic structures are correlated with functions of cells, tissues, organs, and systems of the body. Three hours of lecture per week.

Co-requisite: BIO 118

BIO 117 Human Anatomy and Physiology I Lab (1.0 credit)

Experimental approach to the study of human anatomy and physiology is used to reinforce lecture concepts. The exercises present the core elements of the subject matter in a hands-on manner. The labs are presented in the same time period the material is being discussed in lecture. One two-hour lab per week. Co-requisite: BIO 107

BIO 118 Human Anatomy and Physiology II Lab (1.0 credit)

Experimental approach to the study of human anatomy and physiology is used to reinforce lecture concepts. The exercises present the core elements of the subject matter in a hands-on manner. Labs are presented in the same time period the material is being discussed in lecture. One two-hour lab per week.

Co-requisite: BIO 108

COM 101 Composition and Research (3.0 credits)

Core writing requirement, reviews fundamental principles of rhetoric, grammar, punctuation, and spelling. Requirements include a research paper using MLA documentation guidelines and several expository papers.

LAE 1 Communication Elective (3.0 credits)

The Liberal Arts Elective 1 requirement can be satisfied by successful completion of COM 213 or a similar COM course. Historically, COM 213 has been offered in the curricula on RHSHS campus, but the school reserves the right to provide a course substitute. Students must receive approval from both RHSHS and Alvernia University for transfer credit.

MAT 102 Algebra II (3.0 credits)

This course is designed to prepare science or mathematics major for pre-calculus. Topics include algebra of polynomials, roots, radicals and exponents, relations and functions and their graphs, systems of equations, and logarithms.

Prerequisite: MAT 100 or satisfactory score on Mathematics Placement Test.

LAE 2 Creative Expressions Elective (3.0 credits)

The Liberal Arts Elective 2 requirement can be satisfied by successful completion of MUS or a similar creative expressions course. Historically, MUS has been offered in the curricula on RSHS campus, but the school reserves the right to provide a course substitution. Students must receive approval from both RSHS and Alvernia University for transfer credit.

PHI 105 Introduction to Philosophy (3.0 credits)

Historical introduction to fundamental problems and methods of philosophy based on readings in ancient, medieval, and modern literature.

PHY 110 General Physics I (4.0 credits)

Introduction to standard non-calculus college physics course. Topics include Newton's laws of motion, work, energy, impulse, momentum, properties of solids, liquids, and gases, heat, and the laws of thermodynamics. Course includes three hours laboratory per week. Prerequisite: high school algebra.

SOC 209 Death, Dying, and Bereavement (3.0 credits)

Explore topics of terminal illness, the dying process, and grief, as well as how these topics are influenced by race, class, gender, and religious beliefs. This course fulfills the university human diversity requirement. The school reserves the right to provide a course substitute.

THE 210 Medical Moral Theology (3.0 credits)

Investigation of moral problems which can arise in the area of bioethics. Introductory survey of the basic Christian principles of morality is followed by treatment of various medical moral situations. A natural law methodology is applied throughout the course. Fulfills the Ethics/Morality requirement.

****DUALY ENROLLED STUDENTS:** The course titled "THE 210" satisfies a Medical Ethics requirement for the RSHS DMS certificate, and also satisfies the Philosophy/ Theology requirement for the Alvernia University Associate of Science degree. Students may elect (prior to enrollment in the program) to take an equivalent Medical Ethics course in place of THE 210 to meet the RSHS program requirements. However, additional coursework may be required to also meet the AU Philosophy/Theology requirement. It is highly suggested that the student meet with the RSHS admissions staff to verify course transferability prior to enrolling in a substitute course.

DMS 101 Sectional Anatomy and Terminology for Sonography (2.0 credits) This course covers the human anatomy through the evaluation of transverse, sagittal, coronal, and oblique planes. Terminology relating to ultrasound and structures of the head, neck, thorax, abdomen, pelvis, and extremities are addressed. Students will be able to visualize any portion of a patient's anatomy as a three-dimensional whole and correlate it to various diagnostic images.

Prerequisites: BIO 107/117, 108/118; Co-requisites: DMS 105, 110

DMS 105 Gynecology (3.0 credits)

This course navigates normal anatomy and physiology, and the pathology of the non-gravid pelvis. Structures covered include the vagina, cervix, uterus, ovaries, pelvic musculature and vasculature. Techniques of transabdominal and transvaginal preparation are introduced.

Prerequisites: BIO 107/117, 108/118; Co-requisites: DMS 101, 110

DMS 110 Abdominal I (4.0 credits)

This course covers abdominal sonographic positioning and scanning protocol; related anatomy and physiology to include the liver, gallbladder, pancreas, biliary system, spleen, urinary system, adrenal glands, gastrointestinal tract, peritoneal cavity, retroperitoneum, and abdominal vascularity. Technical information such as procedural and scanning techniques are discussed throughout the course and demonstrated within the laboratory component. Prerequisites: BIO 107/117, 108/118; Co-requisites: DMS 101,105

DMS 115 Obstetrics I (3.0 credits)

This course details the anatomy and physiology of pregnancy to include the first, second, and third trimesters. Normal fetal development, anatomical variations, lab values, placental function, amniotic fluid, and gestational issues are also discussed.

Prerequisites: DMS 101, 105, 110; Co-requisites: DMS 120, 210

DMS 120 Patient Care and Applied Ethics/Law (2.0 credits)

Overview of patient care issues, relative medical terminology, medical ethics and law, healthcare trends, and professionalism are covered. Discussion about credentialing, governing authorities related to sonography practices, and continuing education are also included.

Prerequisites: DMS 101, 105, 110; Co-requisites: DMS 115, 210

DMS 203 Sonographic Physics and Instrumentation I (4.0 credits)

This course examines acoustical physical principles, Doppler ultrasound principles, and sonographic instrumentation. Clinical application and uses in the field for diagnostic medical sonography are reviewed. Theory and laboratory will demonstrate proper techniques to produce quality diagnostic images.

Prerequisites: DMS 115, 120, 210; Co-requisites: DMS 227, 245

DMS 210 Abdominal II (4.0 credits)

This course introduces students to the pathophysiologic principles of the liver, gallbladder, pancreas, biliary system, spleen, urinary system, adrenal glands, gastrointestinal tract, peritoneal cavity, retroperitoneum, and abdominal vasculature. Correlation between Doppler and disease processes will be examined as well as pediatric abdominal pathology.

Prerequisites: DMS 101, 105, 110; Co-requisites: DMS 115, 120

DMS 215 Obstetrics II (3.0 credits)

The course presents the pathological and morphologic process of the second and third trimesters. This includes both maternal diseases and complications and fetal abnormalities. Clinical features, laboratory data, and the relevant histologic aspects of various conditions will be presented.

Prerequisites: DMS 203, 227, 245; Co-requisites: DMS 228, 250

DMS 227 Small Parts and Superficial Structures (2.0 credits)

This course details the anatomy and physiology of various small parts and superficial structures to include thyroid, breast, scrotum, prostate, musculoskeletal, neonatal brain, pediatric hip, and spine. Didactic coursework will correlate the normal and abnormal appearance of organs as well as scanning protocols and techniques.

Prerequisites: DMS 115, 120, 210; Co-requisites: DMS 203, 245

DMS 228 Basics of Vascular (3.0 credits)

This course covers basic positioning and scanning protocol of the vascular system. Vascular terminology specific to the hemodynamics of the arterial, venous, and cerebrovascular application will be presented. Normal, abnormal, and pathologic states of the human vascular system with emphasis on the external carotid system, arterial and venous systems of the extremities.

Theory and laboratory will demonstrate proper techniques to produce quality diagnostic images.

Prerequisites: DMS 203, 227, 245; Co-requisites: DMS 215, 250

DMS 245 Clinical I (4.0 credits)

This course is the first clinical component of the Diagnostic Medical Sonography Program. Clinical will consist of three, eight-hour days per week at a clinical site(s) designated by the RSHS program director. An interview process may be required by the clinical site as part of the approval process. Clinical: 24 hours/week; 12 weeks – 288 hours total (8-hour days with half-hour lunch).

Prerequisites: DMS 115, 120, 210; Co-requisites: DMS 203, 227

DMS 250 Clinical II (6.0 credits)

This course is the second clinical component of the Diagnostic Medical Sonography program. Clinical will consist of four, eight-hour days per week at a clinical site(s) designated by the RSHS program director. An interview process may be required by the clinical site as part of the approval process. Clinical: 32 hours/week; 15 weeks – 464 hours total (8-hour days with half-hour lunch).

Prerequisites: DMS 203, 227, 245; Co-requisites: DMS 215, 228

DMS 255 Clinical III (6.0 credits)

This course is the third clinical component of the Diagnostic Medical Sonography program. Clinical will consist of four, eight-hour days per week at a clinical site(s) designated by the RSHS program director. An interview process may be required by the clinical site as part of the approval process. Clinical: 32 hours/week; 15 weeks – 472 hours total (8-hour days with half-hour lunch).

Prerequisites: DMS 215, 228, 250; Co-requisites: DMS 260

DMS 260 Professionalism and the Sonographer (1.0 credit)

This course is a review of all materials from the Diagnostic Medical Sonography program with an emphasis on the ARDMS examination preparation. Topics such as resume preparation, job searching, and the interview process will also be examined.

Prerequisites: DMS 215, 228, 250; Co-requisites: DMS 255

COST AND EXPENSES

Tuition and Fees

A current copy of the tuition and fee structure for the Diagnostic Medical Sonography program is located at <https://reading.towerhealth.org/health-sciences/financial-information/tuition-and-fees/>.

Billing and Payment

All billing, payments, and receipts are processed by the Student Accounts Office (SAO) located on the ground floor of Reading Hospital's School of Health Sciences.

Tuition: Approximately 30 days prior to each semester, all students will receive an electronic notice to their school email account letting them know that new charges have been posted to their WebConnect account.

Payments: Students are expected to pay their tuition bills in full or sign-up for the RHSHS Payment Plan Option (PPO) at least one week prior to the start of each new semester. Students can make their tuition payments at the SAO, online via their WebConnect account, and by mail. The SAO accepts personal checks, money orders, cash. WebConnect accepts all major credit/debit cards.

Checks or money orders should be made payable to RHSHS and mailed to:
RHSHS
Student Accounts Office
P.O. Box 16052
Reading, PA 19612-6052

More information regarding billing and payments can be found at <https://reading.towerhealth.org/health-sciences/financial-information/student-accounts/>.

Financial Disclosure: By registering for a course, or multiple courses, a student accepts responsibility for all charges associated with the enrolled semester, regardless of payment method. Financial obligations may include, but are not limited to, tuition, fees, housing, library materials or fines, and unpaid room damage charges.

Financial Aid

Financial aid packages for RHSHS Diagnostic Medical Sonography program are not offered at this time. However, our Financial Aid Office can advise students on how to identify other financial resources and funding options. Payment plans are available. For information on tuition and fees, please go to <https://reading.towerhealth.org/health-sciences/financial-information/student-accounts/>.

THE ACADEMIC ENVIRONMENT

Reading Hospital

Reading Hospital is a not-for-profit healthcare center providing comprehensive acute, post-acute rehabilitation, behavioral, and occupational health services to the people of Berks and adjoining counties. Established as The Reading Dispensary in 1867, the Hospital has since expanded into a leader in Level I Trauma care for this region of Pennsylvania.

Reading Hospital, Pennsylvania's largest single hospital between Philadelphia and Pittsburgh, is an acute care hospital with 714 licensed beds, including 112 beds at a dedicated rehabilitation hospital. Reading Hospital's main campus, situated on 36 acres in West Reading, Pennsylvania, is the site for inpatient care, research, and education, as well as the hub for major outpatient services. Facilities on this campus include 20 buildings, 12 of which are devoted to patient care. In addition to the West Reading location, Reading Hospital maintains multiple locations that provide the following services: laboratory, imaging, occupational health, behavioral health, rehabilitation medicine, and speech and hearing throughout the community.

Department of Radiology

Our staff of 29-board certified radiologists are supported by 28 diagnostic medical sonographers. The Department of Radiology consists of the following sections:

- Diagnostic Imaging, which includes CT, MRI, and Ultrasound
- Interventional Radiology
- Radiation Oncology
- Nuclear Medicine

Reading Hospital School of Health Sciences

There has never been a better time to prepare for a future as a healthcare professional. Reading Hospital School of Health Sciences prepares qualified students for exciting careers through diploma, certificate, and accredited programs:

- Diagnostic Medical Sonography
- Emergency Medical Services
- Medical Imaging
- Medical Laboratory Science
- Nursing
- Phlebotomy Technician
- Surgical Technology

The state-of-the-art campus is more than an investment in our students. It represents a commitment to our community as we provide a cohesive and comprehensive education for the men and women who will become the future providers of patient care through Reading Hospital and our affiliated practices.

Staff and Faculty

The Diagnostic Medical Sonography program is composed of experienced practitioners dedicated to teaching professions. Courses are academically stimulating and challenging, as faculty constantly introduce students to the numerous changes in imaging and healthcare.

The faculty and staff are committed to helping students assess their abilities, meet their educational goals, and plan for their professional futures. The supportive relationship between faculty and students encourages students to grow professionally and personally.

Clinical Experience

The Department of Radiology at Reading Hospital maintains state-of-the-art technology in all imaging modalities. Access to digital imaging and picture archival and communication systems provide students with a cutting-edge clinical experience. Throughout their 27-month education, students are exposed to virtually every diagnostic procedure with which they will encounter as an Ultrasound Technologist. The high volume of patients examined provides students with the opportunity to observe and assist with a wide variety of sonographic procedures as they work to achieve competency.

Simulation Laboratory

The Diagnostic Medical Sonography Simulation Laboratory provides the student with a simulated clinical setting in which to practice sonography scanning skills. This setting enables the student to become efficient in basic to advanced skills using state-of-the-art equipment, clinical simulation, interactive learning, and instruction by experienced faculty. This non-threatening simulated learning environment reinforces classroom learning and helps to prepare students for clinical patient care assignments.

Clinical Facilities

Serving as a regional center for the care of patients in numerous subspecialties, Reading Hospital offers students outstanding facilities for clinical experience in the field of Diagnostic Medical Sonography. Throughout the program, qualified clinical staff and faculty supervise students during their many varied clinical experiences.

The Program currently schedules students at the following clinical sites for educational experiences. Students are responsible for securing transportation to and from all educational experiences.

Department of Radiology
at Reading Hospital
Spruce Street & Sixth Avenue
Reading, PA 19611

Reading Hospital
Lab & Imaging Services at Leesport
5479 Pottsville Pike
Leesport, PA 19533

Reading Hospital Imaging Center
at Exeter
2 Hearthstone Court
Reading, PA 19606

Breast Health Center
at Spring Ridge
2603 Keiser Boulevard
Reading, PA 19610

Phoenixville Hospital Outpatient
Diagnostic Imaging Center
420 W. Linfield-Trappe Road
Building A
Limerick, PA 19468

Diagnostic Imaging at Spring Ridge
2603 Keiser Boulevard
Wyomissing, PA 19610

Reading Hospital
Emergency Department
420 S 5th Ave
West Reading, PA 19611

Reading Hospital
Maternal Fetal Medicine
420 S 5th Ave
West Reading, PA 19611

Phoenixville Hospital
140 Nutt Road
Phoenixville, PA 19460

Tower Health Medical Group
Advanced Care for Women
301 South Seventh Avenue
Suite 245
West Reading, PA 19611

Student Services

Students have access to all available resources of the School of Health Sciences Diagnostic Medical Sonography Program. Resources include the Hospital's Library Services, Computer Lab, and Student Health. Additionally, enrolled students also benefit from access to student services offered by Alvernia University.

Library Services at Reading Hospital houses a section dedicated to diagnostic medical sonography. Reference materials, professional books, and imaging journals are available. The privilege of borrowing these materials is extended exclusively to Diagnostic Medical Sonography students. Diagnostic Medical Sonography students also have access to nursing, medicine, and other allied health reference materials. Computers programmed for research, word processing, internet access and email are available in the Library as well.

Orientation Program

All new students who have confirmed their orientation status through the Office of Admissions will be required to attend new student orientation prior to the start of class.

Student Housing

Delta Apartments are located within a mile of the Hospital campus.

Student Lounge

A lounge, study rooms, food, and vending machines are available for student use. The student lounge is located on the ground level of the school.

Parking and Transportation

Parking is limited on the school campus. The majority of students will be assigned parking at an off-site location and utilize the hospital shuttle service. The hospital shuttle bus system provides transportation from the assigned parking location of the school. Students are responsible for their own transportation to and from assigned education or clinical experiences. Local bus service is available. The school does not assume liability for any events related to transportation.

Policies and Procedures

Information pertaining to the student handbook, academic calendar, student grievance procedure, progression and graduation, transfer credit practice, payment plan and refunds, and program policies and processes by which students must follow, can be found at: <https://reading.towerhealth.org/health-sciences/school-policies/>.

Graduate Employment

As a graduate, you will be able to seek entry-level employment at many hospitals, outpatient imaging facilities, clinics and doctors' offices. Sonographer's perform their duties in diagnostic labs, trauma centers, emergency rooms, operating rooms, interventional suites, labor and delivery facilities, and at the bedside.

Advanced Degree through Alvernia University

Graduates looking to advance their professional skills can pursue Alvernia University's Bachelor of Science in Healthcare Science Program. Courses are offered in blended and online formats to allow our graduates to maintain work hours while earning their advanced degree.

The faculty of Reading Hospital School of Health Sciences Diagnostic Medical Sonography Program reserves the right to change the curriculum, education policies, program requirements, fees, and calendar as considered necessary for the progressive development of the Diagnostic Medical Sonography Program.

CONSUMER INFORMATION DISCLOSURE

Federal Regulations stipulate that prospective or current students have the opportunity to access various types of consumer information. To comply

with these regulations, the following information is provided based on the most recent graduate follow-up statistics.

School Information and Policies

To access our current information and policies please go to: <https://reading.towerhealth.org/health-sciences/school-policies/>.

Substance Abuse

Our policy states that no employee or student shall possess any alcoholic beverage or controlled substance (illicit drugs) on Hospital property, School property, in the Delta Apartments or as any part of any School activity, whether for personal consumption or distribution to any other person. Any infraction of this policy constitutes grounds for disciplinary action up to and including expulsion for students and immediate dismissal for employees, as well as referral for prosecution, where appropriate.

Campus Security

It is the intent of Reading Hospital School of Health Sciences to provide a healthful, safe, and secure environment for all patients, students, employees, and guests. It is the responsibility of the Hospital's security staff to safeguard all parties mentioned above as well as Hospital and School property, including student housing offered through the Delta Apartments.

If you wish to obtain a copy of the Campus Crime Report, please contact the Office of Admissions. This report is published annually and includes information about substance abuse and campus security policies, procedures, practices, and statistics.

Family Educational Rights and Family Act Of 1974

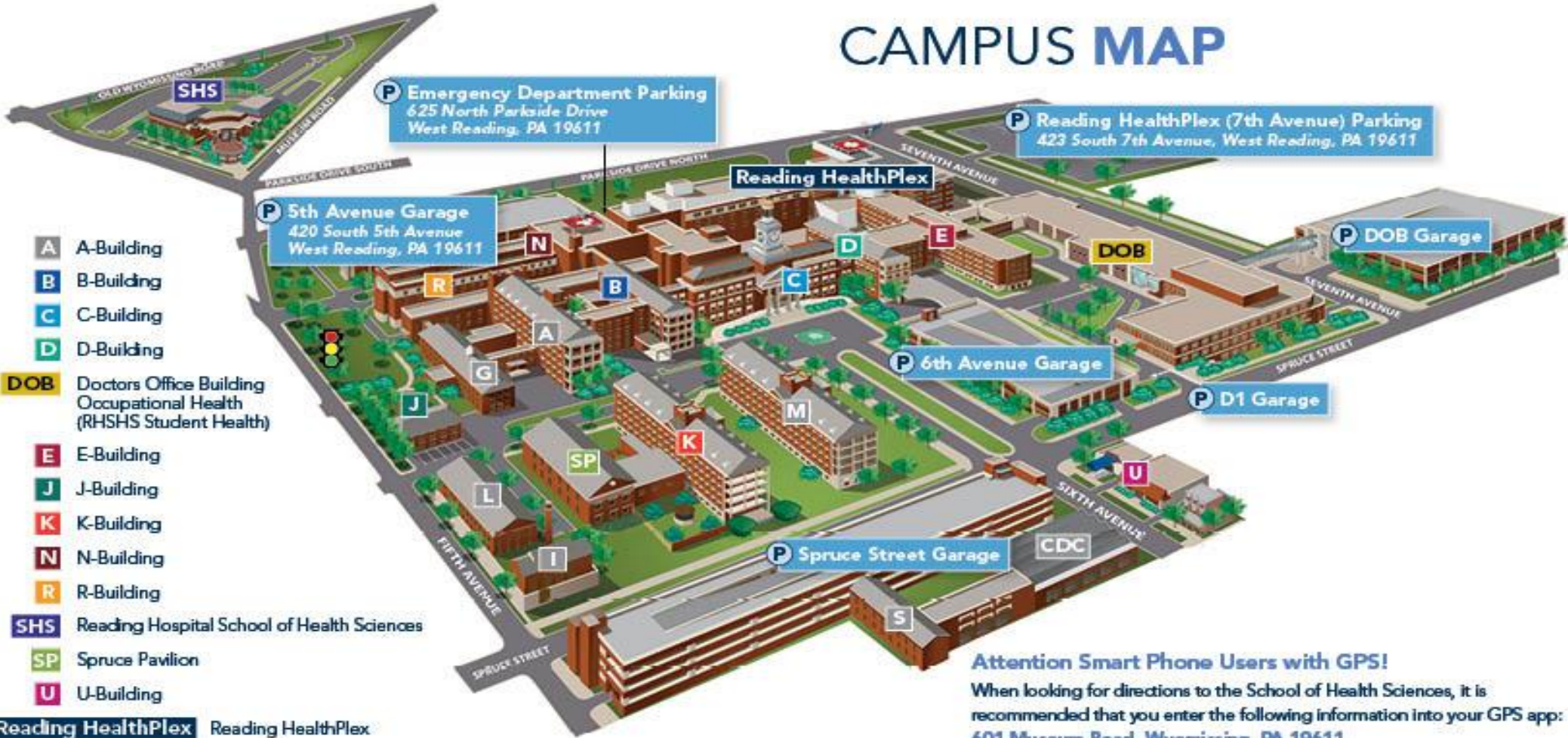
Reading Hospital School of Health Sciences maintains student education.

PROGRAM OUTCOMES

Attrition, Job Placement, and Credential Success Rate Outcomes

Current data can be found on our program website at <https://reading.towerhealth.org/health-sciences/programs/diagnostic-medical-sonography/diagnostic-medical-sonography-program-outcomes/>

CAMPUS MAP



- A** A-Building
- B** B-Building
- C** C-Building
- D** D-Building
- DOB** Doctors Office Building
Occupational Health
(RSHS Student Health)
- E** E-Building
- J** J-Building
- K** K-Building
- N** N-Building
- R** R-Building
- SHS** Reading Hospital School of Health Sciences
- SP** Spruce Pavilion
- U** U-Building

Reading HealthPlex Reading HealthPlex

Other Buildings

- CDC** Child Development Center
- G** G-Building
Photo ID Badges
- I** I-Building
- L** L-Building
- M** M-Building
- S** S-Building

Attention Smart Phone Users with GPS!

When looking for directions to the School of Health Sciences, it is recommended that you enter the following information into your GPS app:
601 Museum Road, Wyomissing, PA 19611





Reading Hospital
School of Health Sciences

READING HOSPITAL
Advancing Health. Transforming Lives.

484-628-0100
RHSchoolofHealthSciences.org